

# Pinewood Parish Council Newsletter

December 2018  
ISSUE FIVE



**Pinewood Parish Council**  
would like to wish you a Merry Xmas and a  
Very Happy, Healthy and Prosperous New Year



## Guide to Key Local Services in the Pinewood Parish area during the Xmas Holiday Period

The times stated below are guides to selected services and may be liable to change

Local Services that you may need over the Xmas period	Xmas Eve Close Time	Xmas Day Open/ Closed	Boxing Day Open/ Closed	New Year Eve Close Time	New Year Day Open/ Closed
Tesco Copdock Pharmacy Petrol	19.00hrs 20.00hrs	Closed Closed	Closed 08.00 to 19.00hrs	19.00hrs 20.00hrs	Closed 08.00 to 19.00hrs
Ipswich Veterinary Centre Scrivener Drive Walk In Clinics*	18.30hrs	10.00hrs* To 10.30hrs*  17.00hrs* To 17.30hrs*	10.00hrs* To 10.30hrs*  17.00hrs* To 17.30hrs*	18.30hrs	10.00hrs* To 10.30hrs*  17.00hrs* To 17.30hrs*
Coop Pharmacy Sheldrake Dr	17.30hrs	Closed	Closed	17.30hrs	Closed
Kew Pharmacy Ellenbrook Rd	22.00hrs	Closed	Closed	22.00hrs	Closed
Pinewood Surgery	18.30hrs	Closed	Closed	18.30hrs	Closed

**NHS 111 is much more than a helpline – if you're worried about an urgent medical concern,  
you can call 111 to speak to a fully trained adviser.**

### Volunteers Wanted

We still have a few spaces for volunteers to deliver our newsletter in Pinewood.

The vacant areas at this time are Belmont Road and adjoining Roads, Woolverstone Close and Appleby Close in Pinewood.

In Thorington Park we have Brimstone Road and Springtail Road areas.

Volunteers are also required to assist in maintaining the Car Parking area at the Community Hall/Church. There will be minimum time requirements as the car park is mainly stone covered with minimal planted areas.

## Pinewood Community Hall Events



The Community Hall hosts a variety of entertainment in the Main Hall, these are ticketed events and offer you the chance to see the very best Professional Tribute acts in the country. There are also themed events taking place throughout the year including, BBQ, Fancy Dress, Halloween and of course the New Year's Eve Party. Further information is available on the link below.



<https://www.facebook.com/pinewoodhallevents/>



## Future Entertainment & Dates

### MEMBERS BAR

Friday 21st December 2018 - Christmas Party



Ticket only function - book early

**SOLD OUT**

### MAIN HALL

Monday 31st December 2018 - New Years Eve Party



Ticket only function - book early

**Few Tickets Left**

### MEMBERS BAR

Friday 25th January 2019 - Annika Rands



Members Only  
Tribute to Cilla & Dusty

### MEMBERS BAR

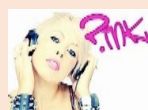
Friday 22nd February 2019 - Richard Whymark



Members Only  
Comedy Night

### MAIN HALL

Saturday 16th March 2019 - Vicky Jackson



Tribute to Pink  
UK's No1 Pink Tribute



## Local Policing Information and Guidance



### Speeding in Pinewood

As mentioned in our October newsletter, Pinewood council has agreed to source a sponsored SID (Speed Indicator Device) to be moved around four identified areas in the parish.

The device has been partially sponsored by our Suffolk County Councillor Mr Christopher Hudson. Complaints on speeding vehicles have been reported by local residents and also identified by Police, who have actioned ongoing speed checks. The SID unit should be in place by the beginning of the new year.

When the longer winter nights arrive, take a fresh look at your home security and remind yourself of how to stay as safe as possible when out and about. At home, keep front and back doors locked at all times and keep keys and valuables out of sight and reach from cat flaps, letterboxes, and downstairs doors and windows.



If you are interested in starting a new NHW Scheme please visit [www.suffolknwa.co.uk](http://www.suffolknwa.co.uk) for further knowledge of how NHW schemes work.

### Pinewood Crime

#### ONLY CALL 999 IN AN EMERGENCY

Our SNT remain active in our local area and are focused on the following issues:

- Increasing patrols and enforcement to combat drugs and alcohol related anti-social behaviour in the area
- Illegal use of vehicles on the roads
- Speeding vehicles in Pinewood
- Focus on Burglaries in the area

We have recently launched our new online crime reporting forms, if you have a non-urgent crime to report

**Report it online**

If you wish for further information on First Principle

Please click on the link below, it will take you to a page that Highlights many sectors concerning crime prevention.

There are headings from A to Z that may assist you in keeping safe..

This information is freely available from the Suffolk Police Web Site

[www.suffolk.police.uk/advice/crime-prevention-z](http://www.suffolk.police.uk/advice/crime-prevention-z)

### Senior Moments'

### *Afternoon tea for the over-50s*

*Join us for an afternoon of fun, friendship and a short 'Songs of Praise'*

*Sunday 27th January 2019  
3 - 5 pm  
at*

*Shepherd Drive Baptist Church*

For further details, please contact Peter Newton:

(01473) 685395 | [peternewton@sdbc.org.uk](mailto:peternewton@sdbc.org.uk) | [www.sdbc.org.uk](http://www.sdbc.org.uk)



# one

APPLY  
TODAY!

  
**Ofsted**  
Outstanding  
Provider

## What's Coming up in the New Year?

### Prospective Student Interviews

Thursday 17th January 2019  
Thursday 14th February 2019  
Wednesday 27th March 2019  
Tuesday 7th May 2019  
Thursday 16th May 2019

### Post 16 Information Evenings

13th March 2019  
2nd May 2019  
6th June 2019

### Performances

Annual Performance Week: 28th January 2019 - 1st February 2019  
Spring Concert: 4th April 2019

Student Leadership Conference - 19th March 2019

Final Open Event & Higher Education Event - 12th February 2019

One Day (Taster Day) - 26th June 2019

**SUFFOLKONE.AC.UK**

EVENTS





## Local Pinewood Parish Council Issues



### Grit Bins

The rules regarding having grit heaps have changed recently and no longer is it deemed acceptable to have open grit heaps.

Winter grit must now be confined in a purpose built container. The container must conform to standards in regard to size, colour, security and location.

It is also a requirement that a nominated person is responsible for seeing that the container is kept full and is also responsible for spreading the grit. To enable this to occur the nominated person must be provided with training, safety equipment and tools.

As a council we were not notified of this change in the grit spreading procedure until recently and had not budgeted to purchase grit containers.

We have also decided that this process of having a nominated person could place a too onerous burden on that person with regard to having a grit container on their property and time spent in spreading grit. The grit may be required to be spread at any time of day or night and in adverse weather conditions. This would result in the nominated person having to be aware of the risks and possible insurance issues.

### Parking

Parking has become a daily issue to many residents who reside in the area of "One", this includes cars parking erratically which in turn is affecting and hindering services to local residents.

### Actions Taken To Date

Our Suffolk County Council continues to have meetings with local facilities to resolve this issue. Continued focus on this issue ensures a positive resolution to the parking issues within this Pinewood area.

### Bus Shelter Maintenance

As you may be aware, the largest covered bus shelters in our area, three in Belmont Road and one in Cottingham Road are due to be repainted. This work has been put back and will now commence Jan 2019.

If you have any information regarding persons who "Fly Tip" in the covered bus shelters please inform the Parish Clerk or call Suffolk Police on 101. If you see anyone fly tipping anywhere in Pinewood, please report it to the Parish council or Police on 101. All information received will be treated as strictly confidential.



**Suffolk  
Meals on Wheels**

**ASPECT LIVING  
FOUNDATION**

*Keeping you independent in your own home.*

Offering a hot lunch time meal delivered to your home.

Registered Charity number 1177031

For more information and menu choice  
visit: [www.aspectliving.org.uk](http://www.aspectliving.org.uk)

Or call us today on 01473 749927  
for a friendly chat

Email: [enquiries@aspectliving.org.uk](mailto:enquiries@aspectliving.org.uk)



**DO YOU  
LIVE IN  
SOUTH WEST IPSWICH**

**ARE YOU LOOKING TO  
BE PART OF SOMETHING?**

**Join the TG family**

Since 1929 TG has been an organisation that has always united women of all ages. Its members meet regularly to enjoy each others company and experience new things.

You are welcome to attend your local guild to find out what it has to offer you before considering membership.

Guild: IPSWICH BELSTEAD  
Location: GUSFORD PRIMARY SCHOOL, SHELDON DRIVE, IPSWICH

Time: 7.30pm  
Day: 2ND THURSDAY IN THE MONTH  
Contact: TRICIA CURRY 01473 681458

If you would like to find out about other guilds in your area please visit [www.tg.com](http://www.tg.com)

**GET SET GO!** Recruitment is starting  
We'd be delighted to hear from you, email [contact@the-tg.com](mailto:contact@the-tg.com) or call 01273 336 0400

**TG**  
Involvement & pride

**UNITING WOMEN  
SINCE  
1929**

Meetings normally take place on the Second Thursday of the month at Gusford School

December 13<sup>th</sup> 2018  
January 10<sup>th</sup> 2019  
February 14<sup>th</sup> 2019

For further information call 01473 681458

Maintenance

Servicing



Dealers of Distinction

Competitive Pricing

Astons Car Sales Ltd  
32 Portmans Walk  
Sir Alf Ramsey Way  
Ipswich  
IP1 2DW  
01473 280055  
Email: [sales@astonscarsales.co.uk](mailto:sales@astonscarsales.co.uk)  
Web: [www.astonscarsales.co.uk](http://www.astonscarsales.co.uk)  
<https://www.facebook.com/Astons-Car-Sales-291930814257638/>

Astons has been established for more than 20 years and throughout that period it has earned a name for the supply of quality used cars. All vehicles offered for sale are fully prepared to manufacturers schedules which include servicing and MOT and are backed up with a comprehensive warranty for customer peace of mind.

Astons is renowned for its personal, second to none customer service. In depth product knowledge is available for existing and prospective customers, which allows for complete peace of mind when purchasing from this renowned supplier.



### Shepherd Drive Baptist Church

**Sunday 16<sup>th</sup>  
December**

**All-age Carol Service  
by Candlelight  
4.30 p.m.**

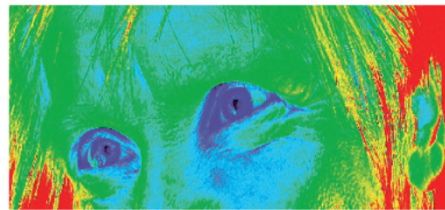
followed by a Christmas tea



**Christmas Eve  
Carols By Candlelight  
7.30 p.m.**  
followed by refreshments



**Everyone Welcome**



**Addiction** means you've lost control

**Recovery** means getting it back

**We're here to help.**

#### **Women Together**

a recovery group for women affected by addictions

**Mondays:** 10.30am to 11.30am

**Venue:** Whitton Baptist Church,  
209 Highfield Road, Ipswich, IP1 6DH

**Mondays:** 7.45pm to 9.00pm

**Venue:** Shepherd Drive Baptist Church,  
Shepherd Drive, Pinewood, Ipswich IP8 3SL

**Thursdays:** 1.15pm to 2.30pm

**Venue:** Ipswich Community Church,  
Clarkson Street, Ipswich IP1 2JL

**Phone:** 07503 416576

**Email:** [womentogether@talithakoum.org.uk](mailto:womentogether@talithakoum.org.uk)

**Website:** [www.talithakoum.org.uk](http://www.talithakoum.org.uk)

(closed Bank Holidays)



### Pinewood Parish Councillors

Name	Position	Email Address
Mr R Manning	Chairman	<a href="mailto:pinewoodpc@ntlworld.com">pinewoodpc@ntlworld.com</a>
Mr A Rust	Vice Chairman	<a href="mailto:pinewoodpc@ntlworld.com">pinewoodpc@ntlworld.com</a>
Mr N Smith	Councillor	<a href="mailto:pinewoodpc@ntlworld.com">pinewoodpc@ntlworld.com</a>
Mrs B Calver	Councillor	<a href="mailto:pinewoodpc@ntlworld.com">pinewoodpc@ntlworld.com</a>
Mr S Fisher	Councillor	<a href="mailto:pinewoodpc@ntlworld.com">pinewoodpc@ntlworld.com</a>
Mrs J Preston	Co-opted Councillor	<a href="mailto:pinewoodpc@ntlworld.com">pinewoodpc@ntlworld.com</a>
Mr G Dix	Co-opted Councillor	<a href="mailto:pinewoodpc@ntlworld.com">pinewoodpc@ntlworld.com</a>
Mrs S Peartree	Parish Clerk	<a href="mailto:pinewoodpc@ntlworld.com">pinewoodpc@ntlworld.com</a>
Mr C Hudson	Suffolk County Councillor	<a href="mailto:christopher.hudson@suffolk.gov.uk">christopher.hudson@suffolk.gov.uk</a>
Mr D Busby	Babergh District Councillor	<a href="mailto:david.busby@babergh.gov.uk">david.busby@babergh.gov.uk</a>
Mr P Burgoyne	Babergh District Councillor	<a href="mailto:Peter.Burgoyne@Babergh.gov.uk">Peter.Burgoyne@Babergh.gov.uk</a>



### Pinewood Parish Council - Contact Address



Pinewood Community Hall, Laburnum Close, Ipswich, Suffolk, IP8 3SL.

Office normally attended between 9am & 5pm, answerphone on 01473 692690 is available at all times.

Visit Our New Website for more Local Information at:

[www.pinewood.onesuffolk.net/parish-council](http://www.pinewood.onesuffolk.net/parish-council)

### Future Pinewood Parish Council Meeting Dates

Monday 10<sup>th</sup> December 2018 (Second Week)

Monday 13<sup>th</sup> January 2019 (Second Week)

### Have you ever thought of being a Parish Councillor for Pinewood

Interested? Contact the Parish Clerk for further information on how you can get involved. Parish Council elections take place every four years, our next Pinewood election will be in 2019.

If you are interested in helping your community, please come along to one of our Council meetings to gain a further insight to what goes on.

### Contact Details for the Newsletter

To contact the parish newsletter please mail

[pinenews@btinternet.com](mailto:pinenews@btinternet.com)

Are you a local business?

Would you like to reach 1900 local homes and businesses by advertising in this newsletter?

If so, enquire about our competitive advertising rates. The Newsletter is printed bi-monthly.

Would your company like to sponsor our Parish Newsletter?

If so, please get in touch!

If you do not use email, please submit your advertisements with a contact phone number to the Parish News Editor at Pinewood Community Hall.

News and reports from Parish organisations are particularly welcome but contentious issues or articles promoting personal causes should be avoided – the Editor reserves the right not to print and to edit items submitted for publication. The views expressed in the Newsletter are not necessarily those of the Parish Council or Editor, and no liability can be accepted for any errors or omissions.

Corrections will be published should they occur.

This Newsletter is Published by Pinewood Parish Council, Laburnum Close, Ipswich, Suffolk IP8 3SL

## Useful Contact Details

 Name	Phone Number	Email/Web/Twitter Address 
Police – Fire - Ambulance	999 Emergency Calls	101 Non Emergency Calls Only
Hadleigh Police Direct Phone Hadleigh Police Twitter Account Hadleigh Police Email Address	01473 613500	<a href="http://www.suffolk.police.co.uk">www.suffolk.police.co.uk</a> <a href="https://twitter.com/@HadleighPolice">https://twitter.com/@HadleighPolice</a> <a href="mailto:snt.hadleigh@suffolk.pnn.police.uk">snt.hadleigh@suffolk.pnn.police.uk</a>
Police Connect – Website	Sign up on the website	<a href="http://www.suffolk.police.uk">www.suffolk.police.uk</a>
Crimestoppers Anonymous	0800 555 111	
Suffolk SAFEkey	08444 121802	<a href="http://www.suffolk.safekey.org.uk">www.suffolk.safekey.org.uk</a>
Burglar Alarm - Panther Security	01206 764303	<a href="http://www.panthersecurity.co.uk">www.panthersecurity.co.uk</a>
Emergency Plumber/Electrician	0333 0146 190	<a href="http://www.checkatrade.com">www.checkatrade.com</a>
Ipswich Hospital	01473 712233	<a href="http://www.esneft.nhs.uk/">www.esneft.nhs.uk/</a>
NHS Emergency Information	111 Emergency Info	<a href="http://www.111.nhs.uk/">www.111.nhs.uk/</a>
Pinewood Doctors Surgery	01473 682614	<a href="http://www.derbyroadpractice.co.uk">www.derbyroadpractice.co.uk</a>
Pinewood Parish Council Pinewood Parish Website	01473 692690	<a href="mailto:pinewoodpc@ntlworld.com">pinewoodpc@ntlworld.com</a> <a href="http://www.pinewood.onesuffolk.net">www.pinewood.onesuffolk.net</a>
Babergh District Council	0300 1234 000	<a href="http://www.babergh.gov.uk">www.babergh.gov.uk</a>
Suffolk County Council	0345 606 607	<a href="http://www.suffolk.gov.uk">www.suffolk.gov.uk</a>
Ipswich Borough Council	01473 432000	<a href="http://www.ipswich.gov.uk">www.ipswich.gov.uk</a>
Suffolk Trading Standards	03454 04 05	<a href="http://www.suffolk.gov.uk/tradingstandards">www.suffolk.gov.uk/tradingstandards</a>
Suffolk One	01473 556600	<a href="http://www.suffolkone.ac.uk">www.suffolkone.ac.uk</a>
Age UK – Website	01473 351234	<a href="http://www.ageuk.org.uk">www.ageuk.org.uk</a>
Wellbeing Suffolk - Website	0300 123 1503	<a href="http://www.wellbeingnands.co.uk">www.wellbeingnands.co.uk</a>
Active Living – Meals on Wheels	01473 749927	<a href="http://www.aspectliving.org.uk">www.aspectliving.org.uk</a>
British Gas - Emergency Number	0800 111 999	<a href="http://www.britishgas.co.uk">www.britishgas.co.uk</a>
Electricity – Emergency Number	105	<a href="http://www.ukpowernetworks.co.uk">www.ukpowernetworks.co.uk</a>
Report Road Defects (On-Line)	N/A	<a href="http://www.suffolk.gov.uk">www.suffolk.gov.uk</a>
British Telecom Customer Service	0870 062 6712	<a href="http://www.bt.com/help/home/faults/">www.bt.com/help/home/faults/</a>
Ipswich Household Waste Centre	Closed Wednesday	April- September 9am to 5pm October – March 9am to 4pm