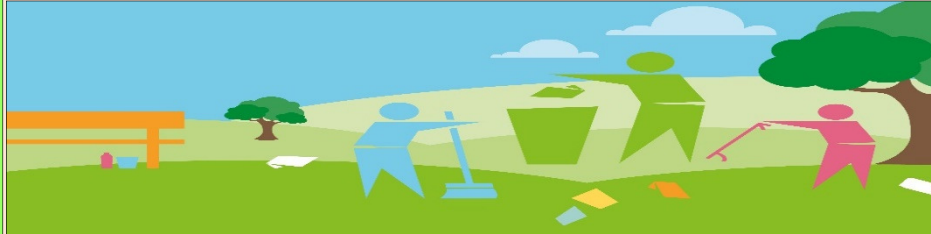


Pinewood Parish Council Newsletter

February 2020
ISSUE TWELVE



Join us for this event... Pinewood Parish Litter Pick taking place on Saturday March 21st 2020

This year we are carrying out a litter pick that coincides with Babergh District Council's Litter Pick & The Great British Litter Pick and are looking for volunteers to join with us on this event.

Can you join a team that will make a difference in our area by picking up litter that has been discarded and sits in our green areas and hedgerows!

Last years Litter Pick in September saw a team of nine of us clearing a dozen bags of waste and other large pieces of debris from the roadsides in 2 hours, just think what a larger group could clear. We will not be picking any roads with speed limits of more than 30mph for safety purposes, this is carried out by contractors.

The timing will be between 10.00hrs to 12.30hrs

High Visual Vests, Bags, Rims, and Pickers will be supplied by the Parish Council and tea, coffee and biscuits will be served at the Community Hall on your return
You will need to supply your own gloves.

Pickers will be insured, minors under 16 must be accompanied by a grown up.
Please email your name and address and how many volunteers will attend.

Mail: dixge@btinternet.com as we require numbers simply to get the protective equipment arranged for the day.

Some of the Volunteers from 2019



Pinewood Community Hall

Pinewood Community Hall



Pinewood Community Hall hosts a number of regular clubs and organisations during the weekdays/evenings which are open to you to join: Art Group, Free Style and Street Dance, Line Dancing, Majorettes, Short Mat Bowls, Taoist Tai Chi and Slimming World

Visit www.pinewood.onesuffolk.net/parish-council

The Community Hall is available for private hire on a Saturday evening for a one-off party or celebration (subject to availability) and as a resident you may benefit from reduced hiring charges,

For further information email: pinewoodpc@ntlworld.com

There is a members bar on a Friday night from 7.30pm - 11.30pm offering a variety of entertainment for the members which is mainly free. Our membership is currently full but we operate a waiting list for anyone wishing to join! You must be over 18 years old.

The Community Hall also hosts a variety of entertainment in the main hall, these are ticketed events and offer a chance to see some of the best Professional Tribute acts in the country.

for more information regarding the members bar and the main hall entertainment visit our facebook page:

<https://www.facebook.com/pinewoodhallevents/>



Update on the A14

On Friday 7th February representatives from Pinewood, Capel St Mary and Sproughton met with Simon Amor, Regional Director of the Highways Agency, Eastern Region and James Cartlidge MP to discuss possible improvements to parts of the A 14 which border our parishes.

Noise is an issue which affects many households and measures to mitigate this were discussed. There are three ways in which this can be done:

Insulation of properties - Noise barriers or fences - Resurfacing

In order to qualify for any of these measures we would need to be included in a Noise Improvement Area. The limits for these areas are set by DEFRA and this area is not yet designated as such. James suggested that we all put our concerns in writing and he will forward them on together to help put a case for the designation process. DEFRA will be revisiting NIAs in the near future.

I pointed out that stretches of the A14 to the east and west of Ipswich have been resurfaced with a much quieter material but the stretch which passes by the most populated part in this area, that of parishes present and also probably Stoke Park, still had the noisy concrete surface.

This surface will need replacing in the next 5 to 8 years but the priority for resurfacing is always that of safety. Simon said that those major roads for which Highways England is responsible that are worn out and crumbling will therefore take priority. He said there are a number of such roads in the Eastern Region which are in a worse state than the part of the A 14 under discussion.

It is therefore unlikely that the concrete surface will be removed and replaced during the next 5 years.

Even if all properties were fitted with suitable glazing, the effects would obviously be undermined if windows were opened in hot weather and obviously would be of no use when residents are outside enjoying their gardens. Therefore this would not be an ideal solution.

As the A14 is in an elevated position any fences or barriers would have to be extremely high to be effective. The use of vegetation as a screen was suggested but it would not be effective in this situation.

The removal of the concrete surface would seem to be the obvious long term solution.

Options to improve the Copdock Mill Interchange so that traffic from all directions can move more freely are now being actively considered and will be made public in due course. It is hoped that RIS Phase 2 funding, to be announced in the near future, will be available for this work.

Measures to mitigate the effect of closures on the Orwell Bridge have been in the news recently. It is hoped that it will be possible to avert some closures of the bridge because of wind speed by instituting a 40 mph limit for all vehicles. It will not be possible for this to happen until later in the year as new signage will have to be erected and Statutory Orders regarding speed limits have to be issued before this can happen.

So I am afraid for the moment we will have to wait some time longer for the improvements which we all wish for to happen.

It was good however to discuss our concerns with those who can help to effect change and Simon said he would be happy to speak to us again in the future and our MP said he is working with other local MPs to bring about the best outcomes for this part of East Anglia.

Beryl Calver

Fly Tipping in Pinewood

Recently there have been instances of Fly Tipping occurring in Pinewood. If you discover fly-tipped waste please:

Don't touch the waste - it may contain syringes, toxic chemicals or other hazardous substances.

Don't disturb the site - there may be evidence that could help identify the fly-tippers and lead to their prosecution.

Do visually try to work out what the waste consists of and how much there is - take photos if it is safe to do so. Make a note of the day, date and time you saw the tipping, its exact location and whether it's in or near water. Keep any notes you make, even scribbled ones, as they can be very valuable as evidence. Contact Babergh District Council as soon as possible so that we can investigate.

If you witness someone fly-tipping - make a note of how many people are involved and what they look like, what has been dumped - how much and what it looks like also details of any vehicles involved including make, colour and registration number if possible and call 999 if the incident is still in progress.

Be very careful Remember that fly-tippers are doing something illegal – they are unlikely to welcome people observing them or taking notes or photographs.

PLEASE REMEMBER THAT

1. You are legally responsible for any household waste produced on your property.
2. You could face an unlimited fine if your waste ends up being fly-tipped and you cannot show that you took reasonable steps to prevent it.
3. You must ensure it is only transferred to an authorised person or waste site that is appropriately registered with the relevant enforcement body.
4. If you are using a waste carrier (other than your Local Council) to remove household, garden or construction waste always ask for their waste carrier number. If in doubt check their details on the **public register of waste collectors**, or call the Environment Agency on 08708 506 506.
5. Always ask a carrier what exactly is going to happen to your waste and seek evidence that it is going to be disposed of appropriately. A legitimate, professional waste carrier who wants your business should not object to being asked reasonable questions.
6. Finally make sure you get a proper invoice and receipt for your waste and retain this as proof.

Volunteers still Required to deliver our Newsletters every 2/3 months in and around the Belmont Road area

The available areas are Belmont Road and adjoining roads, Woolverstone Close and Appleby Close etc.

If you are interested in helping us contact or speak to the Parish Clerk at the Community Hall or
Email: dixge@btinternet.com

SUFFOLK HIGHWAYS

We often receive reports of privately owned hedges overgrowing onto the highway. If a tree or hedge is within your property, you have a duty of care to ensure that these are cut back, particularly at junctions or accesses.

For further info and to report overgrown trees, visit <https://suffolk.gov.uk/roads-and-transport>



As well as being an eyesore and a nuisance, on most public land it is an offence under the Dogs (Fouling of Land) Act 1996 not to clear up after your dog when it has fouled the area. Babergh District Council has powers to issue fines or prosecute which could lead to a £1000 fine. Wherever and whoever they may be please report the culprits with photos if possible. Many complaints have been on local media regarding this issue, report it to get it stopped.

There are sufficient dog bins placed around the parish for use by residents walking their dogs and leaving packages in trees. Letting the dogs mess on the ground and not cleaning it up is unacceptable and irresponsible. These bins are emptied very regularly, sometimes on long bank holidays such as Xmas they change collection days. If the bin is full take the poo bag home with you and bin it, there is no need to throw it on the grass close to the overfilled bin.

<https://www.babergh.gov.uk/environment/dog-control/dog-fouling/>

Parking in Pinewood

Date agreed for plans to tackle Parking problems

Councils in Suffolk are ramping up activity in order to take on responsibility for local parking management, due to commence **April 2020**. Parking patrols in Suffolk will soon be managed by district and borough councils, in a bid to improve parking locally and drive down nuisance and unlawful parking in towns and villages across Suffolk. Traditionally, roadside parking offences were a matter for the Police. However, parking has become a lower priority for them due to other pressures, therefore your council is transferring this responsibility to our local district and borough councils by a process known as Civil Parking Enforcement, or CPE. Suffolk Constabulary is supportive of the move because the transfer of responsibilities will enable them to spend additional time on keeping communities safe and arresting and bringing offenders to justice. Moving the responsibility from the police to local councils requires that statutory notice is given in Parliament. The parliamentary order was laid down in Parliament from 9th January until 30th January 2020. CPE has been running successfully in the Borough of Ipswich since 2005; both Ipswich Borough Council and all the district councils have been working collaboratively with Police and Suffolk County Council in the planning stages to ensure a smooth implementation county-wide.

The changes are due to take affect on all roads in Pinewood from April 2020 where parking restrictions are installed

If your road has restrictions on parking, it will be monitored by members of the Parking Enforcement Team. District and borough councils will be empowered to make local decisions to suit local circumstances; Irresponsible and nuisance parking is to be enforced and will be supporting pedestrians, vulnerable road users, public transport services, drivers and emergency services to use the network more safely.



From April 2020 to report a parking problem please contact:

<http://www.ipswich.gov.uk/content/report-parking-problem>

A message on parking from your Babergh District Councillor, Zac Norman.

"This past year has been incredibly difficult for all those in Pinewood who are still suffering from the inappropriate parking which is taking place around a vast number of roads in the parish.

As one of your District Councillors who doesn't have any control over highways, it is still a paramount concern of mine, and I would like to do as much as I can to reduce this parking which has been plaguing the lives of residents for a number of years.

Along with Pinewood Parish Council, County Councillor Hudson and other stakeholders, I have met with Suffolk One who share our concerns with the parking however the element of proving the source of the problem is difficult, whilst the college have been deploying employees to speak to students who have parked inappropriately, this has had little effect.

I have tried to get some concrete answers and action out of Suffolk County Council with little result despite the downright life threatening parking that has been displayed in some roads and closes, which wouldn't allow any emergency vehicles through.

We can only hope that when Civil Parking Enforcement (the transfer of highways issues to the council from the police) comes into force that we can help further to combat these local issues rather than relying on our downtrodden police force.

I will continue to raise these issues wherever I can to make Pinewood safer and better for all residents"

You can contact Zac by email at: zachary.norman@babergh.gov.uk

A message on parking from your Suffolk County Councillor, Christopher Hudson.

"As your County Councillor, I remain worried and concerned that the parking issues near Suffolk One remain unresolved and demand the most urgent mitigation.

To that end, I am in touch with the County, College and Ipswich to ensure that the new Civil Parking Enforcement officers blitz Pinewood to clear up the issue by fining those who park unlawfully and inconsiderately- furthermore, I understand the new Parliament will pass the Orders to enable the enforcement to begin in April and I will continue to press for urgent action to resolve the nightmare for residents"

Contact Christopher by email at: Christopher.Hudson@suffolk.gov.uk

Local Policing Information

Only Call 999 In An Emergency Or If You Witness A Crime In

Progress

Did you know that you can report non-urgent issues much quicker by using the web based reporting system on the Suffolk Police web site.

Our SNT remain active in the local area and are focused on the following key areas:

1. Increasing patrols and enforcement to combat drugs and alcohol related issues in the area.
2. Working to control issues of young drivers who meet up at the Tesco site who travel Pinewood creating mayhem by speeding, playing loud music and using vehicles with high noise emissions from the exhaust. Call 101 when this happens near you.
3. There remains a focus on speeding in all areas of Pinewood. Vehicles speeding nationally has risen hence a crack down on this behaviour is at the forefront of Police operations.
4. Anti Social Behaviour retains focus at the top of the agenda as always.

Latest crime figures released by the Police UK web site for the Pinewood area are available at

www.police.uk/

Have you ever wondered what the Police in Suffolk focus on, if so, please check the link below.

http://www.suffolk.police.uk/sites/suffolk/files/ceo_cc_feb_-_online_0.pdf



SUFFOLK POLICE ARE RECRUITING

Walk a new path with Suffolk Constabulary

If you would like to apply, please complete the Eligibility Criteria Form on the Suffolk Police web site. The job of being a police officer will take you beyond your own expectations and give you more variety, challenge and reward than you could ever expect from any other career.

Ultimately, your role will be to prevent and solve crime. But it is also about working in partnership with communities to make a real difference and improve the quality of life for everyone, making our local communities feel safe and protected.



East Anglian Air Ambulance

East Anglian Air Ambulance (EAAA) is an incredible community-funded service which helps to save hundreds of lives each year. Its highly-skilled doctor and critical care paramedic teams take the hospital to the patient and can attend any type of life-threatening or life-changing incident, such as a road traffic collision or cardiac arrest.

Mission 24/7

EAAA is well equipped to fly in the hours of darkness, landing at unlit sites, however they currently only fly until 1:30am in the morning, coming back online by helicopter at 7am. This means there is a five and a half hour gap in the region where there is no helicopter coverage if needed.

The time of day should not dictate the type of emergency medical care available in the region and EAAA is passionate about raising an additional £1 million a year to fund the extra flying hours needed to provide a 24/7 helicopter emergency medical service.

Help keep the East Anglian Air Ambulance flying and saving lives.



A way to help EAAA fly 24/7 next year, and save hundreds more lives, is to play in the charity's weekly lottery.

The lottery funds 45% of the charity's life-saving service and you can sign up from as little as £1 a play.

Weekly prizes range from £50 to a £1,000 – as well as a weekly rollover prize.

Join the EAAA Lottery - Find out more at www.eaaa.org.uk/shout

Show your support for EAAA by getting up and going yellow at home, school or work!
Thursday 4th June



Why not set yourself a new challenge in 2020 by becoming a Pinewood Parish Councillor! We need people like you to come and help shape our Parish by getting involved in local issues.

Are you interested in trying to make a difference in Pinewood Parish, which is made up of Pinebrook and Thorington Park.

Make differences to your local environment, including recreational facilities, local transport, planning, housing, parking and speeding?

If so we would love you to join us!

We have THREE VACANCIES – can you make a difference?

If you would like more details, please contact the Parish Clerk by email pinewoodpc@ntlworld.com or any of the Councillors featured on our contact page or by calling 01473 692690

Pinewood Councillor Contact Details

Name	Position	Email Address
Mr A Rust	Chair	pinewoodpc@ntlworld.com
Mrs B Calver	Vice Chair	pinewoodpc@ntlworld.com
Mr G Dix	Councillor	dixge@btinternet.com
Mr R Manning	Councillor	manningrobert@hotmail.co.uk
Mr N Smith	Councillor	pinewoodpc@ntlworld.com
Mrs J Preston	Councillor	pinewoodpc@ntlworld.com
Vacant	Councillor	Could this be you!
Vacant	Councillor	Could this be you!
Vacant	Councillor	Could this be you!
Mrs S Peartree	Parish Clerk	pinewoodpc@ntlworld.com
Mr C Hudson	Suffolk County Councillor	christopher.hudson@suffolk.gov.uk
Mr Zachary Norman	Babergh District Councillor	zachary.norman@babergh.gov.uk
Mr Ric Hardacre	Babergh District Councillor	Richard.Hardacre@babergh.gov.uk
Mr Tim Passmore	Suffolk Police & Crime Commissioner Twitter Account	spcc@suffolk.pnn.police.uk https://twitter.com/TimSPCC

Pinewood Parish Council Meeting Dates 2020

Meetings take place at the Pinewood Community Hall starting at 19.30hrs,
and normally take place on the second Monday of the Month.

Monday 09th March, Monday 20th April,
Monday 18th May, Parish Council meeting and Annual Parish Meeting will take place
Monday 08th June, Monday 13th July, Monday August to be confirmed
Monday 14th September, Monday 12th October, Monday 09th November,
Monday 14th December,

DON'T FORGET ALL RESIDENTS ARE WELCOME TO ATTEND COUNCIL MEETINGS

Contact Details for the Newsletter

To contact the Parish Newsletter please email
dixge@btinternet.com

Are you a local business? Would you like to reach 1950 local homes and businesses by advertising in this newsletter? If so, enquire about our competitive advertising rates. The newsletter is printed periodically. If your company would like to sponsor our Parish Newsletter? please get in touch!

News and reports from non-political and parish organisations are particularly welcome but contentious issues or articles promoting personal causes should be avoided – the Editor reserves the right not to print and to edit items submitted for publication. The views expressed in the newsletter are not necessarily those of the Parish Council or Editor, and no liability can be accepted for any errors or omissions.

Corrections will be published should they occur.

This newsletter is published by Pinewood Parish Council, Laburnum Close, Ipswich, Suffolk IP8 3SL

Pinewood Parish Council - Contact Address

Pinewood Community Hall, Laburnum Close, Ipswich, Suffolk, IP8 3SL.

Office normally attended between 9am & 5pm, answerphone on 01473 692690 is available at all times.

Visit our Website for more Local Information at:

www.pinewood.onesuffolk.net/parish-council