

Pinewood Parish Council Newsletter

October 2018

ISSUE FOUR

Question Time drop-in event

Babergh District Council's Leader, Cllr John Ward and Deputy Leader, Cllr Jan Osborne are inviting people who live and work in the district to ask questions about the council's services and initiatives at their Question Time drop-in events.

**Pinewood Community Centre, Laburnum Cl, Ipswich IP8 3SL
will be hosting the Cllrs on Saturday 3 November.
Why not come along!**



Come along to our
Question time

The Leader and Deputy Leader of Babergh District Council are inviting residents from across the area to ask their questions about council services and initiatives.

10am to Midday



Leader
Cllr John Ward



Deputy Leader
Cllr Jan Osborne

Voluntary Parish Newsletter Delivery Persons Required

We still have a few spaces for volunteers to deliver our newsletter which is available every 8 weeks. (bi-monthly)

The vacant areas at this time are Belmont Road and adjoining roads, Woolverstone Close and Appleby Close in Pinewood.

In Thorington Park we have
Brimstone Road and Springtail Road areas with adjoining roads.
Newsletters will be delivered to the delivery volunteers home.

Electronic Newsletter

Register now for your e-copy by clicking on the link pinenews@btinternet.com supplying your house number and road, no other details are required.

Contact Details for the Newsletter

To contact the parish newsletter please mail

pinenews@btinternet.com

Are you a local business?

Would you like to reach 1900 local homes and businesses by advertising in this newsletter?

If so, enquire about our competitive advertising rates. The Newsletter is printed bi-monthly.

Would your company like to sponsor our Parish Newsletter?

If so, please get in touch!

If you do not use email, please submit your advertisements with a contact phone number to the Parish News Editor at Pinewood Community Hall

Pinewood Community Hall Events



The Community Hall hosts a variety of entertainment in the Main Hall, these are ticketed events and offer you the chance to see the very best Professional Tribute acts in the country. There are also themed events taking place throughout the year including, BBQ, Fancy Dress, Halloween and of course the New Year's Eve Party. Further information is available on the link below.

<https://www.facebook.com/pinewoodhallevents/>

Future Entertainment & Dates

MAIN HALL

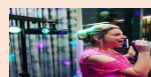
Saturday 27th October - Halloween Party

There Are A Few Tickets
Still Available
Call 01473 692690



MEMBERS BAR

Friday 9th November - Chelsea Francis



MAIN HALL

Saturday 24th November- THE DRIFTERS 2018 UK TOUR



MEMBERS BAR

Friday 21st December 2018 - Christmas Party



MAIN HALL

Monday 31st December 2018 - New Years Eve Party



Pinewood Short Mat Bowls Club

We are looking to increase our membership. If you are interested in joining us, come along any Tuesday or Friday morning to Pinewood Community Hall at 10am, we would love to meet you! Both men and women players are welcome, there are no age restrictions on this enjoyable sport.

Please contact the Secretary on: 01473 411210 or 07785 236726 or mail: misudds@aol.com

Local Policing Information and Guidance

Speeding in Pinewood

As you may be aware speeding on roads within Pinewood is becoming a dangerous habit and the Police are constantly monitoring this issue with speed checks. Three local areas that have become of great concern due to public complaints are Grove Hill, Ellenbrook Road & Scrivener Drive. The Parish Council, who are equally concerned about speed has agreed to install a portable Speed Indicator Device (SID) for the Parish.

What is a "SID"

It is a "Speed Indicator Device" that senses speed from vehicles travelling along the road. These commonly used devices are used as a speed calming measure for sensitive areas such as those with high amounts of pedestrians and those areas recognised as speeding hotspots.

The system DOES NOT collect registration numbers, only speeds of travelling vehicles. It can display the current travelling speed of the vehicle and also show a message to the driver such as a happy face or a thank you for not speeding comment.

The device will be active in four identified areas of concern in Pinewood Parish as previously mentioned on a four weekly rotational system.

It has been proven that SID speed devices contribute to a speed reduction of around an average of 3 mph.

Speeding is not necessarily a habit of drivers from our Parish. There are an enormous amount of vehicles that use our link roads as shortcuts from other areas of Ipswich to and from the A1214, in fact more than 65,500 vehicle journeys a week take place along Scrivener Drive alone. Journeys were confirmed by an official Vehicle/Speed Monitor that had taken place in 2017.

Images below show a sample of a
Speed Indicator Device



Be A Local Policing Volunteer Police Volunteers

Anyone interested in becoming a Local Policing Volunteer will undergo a training package, be given a tabard and have a direct point of contact with police, as well as be included in regular meetings. Volunteers will need to undergo and pass security checks at the appropriate level for the role, although no medical assessment is required. For further information follow link

www.suffolk.police.uk



Safer Neighbourhood Team

If you see something suspicious happening call 101 to report it, you should only call 999 in an emergency. You can also report crimes on line at: www.suffolk.police.uk

Our SNT remain active in our local area and remain focused on:

- 1] Increasing patrols and enforcement to combat drugs and alcohol related anti-social behaviour in the local parks
- 2] Illegal use of the roads
- 3] Tackling the use of off road bikes in areas

Do you worry about who knocks on your door?

The Constabulary has secured a number of RING video doorbells which can be applied for by residents in Suffolk free of charge and act as a deterrent to potential burglars. This is a great initiative and opportunity and would allow people to feel safer when away from their property. To register an interest please mail doorbell@suffolk.pnn.police.uk

Babergh District Police Forum Meeting

The next meeting will be held at East Bergholt Sports Pavilion on 10th October at 7.30pm, the meeting can also be attended by members of the public.

OPEN EVENTS

13

October 2018

9:30am-12:30pm

18

October 2018

5pm-8pm

22

November 2018

5pm-7pm

12

February 2019

6pm-8pm

SUFFOLKONE.AC.UK

one

SIXTH FORM COLLEGE

The Most Common Issues Reported to Pinewood Parish Council

Scheduled Tree Works Notification - September to December

Tree works have been scheduled in the area of Scrivener Drive and Shepherds Drive between the end of September and December. The work will spread over this timeline and it is hoped to minimise traffic disruption in the locality. Essentially it's a prior notification of scheduled tree works to clear obstruction to pedestrians and sight lines and will also include the coppicing of a number of species of trees and Hazel to address encroachment of structures in both Scrivener Drive and Shepherds Drive.

The shrub beds contain a wide mix of tree species and the intended management is to promote the retention of the best suited and management of the remainder.

Trees and Shrubs Overhanging Pavements and Roads

Do you have trees and bushes overhanging your property, did you know that the property owner or the person you rent your property from are liable for the maintenance of them and responsible for keeping the overhanging areas free for the travel of pedestrians and vehicles.

The owner or occupier of a property has a legal responsibility to ensure that the 'public highway' adjacent to a property is not obstructed by vegetation from their property.

Bushes and trees overhanging pathway at junction of Hawthorn Drive/Belmont Road & Dog Bins & Litter Bins

Actions Taken

Trees and bushes cut back by the local council to ensure a safer right of way on the identified area above and also the walkway between the Tesco store and Park and Ride facility has also been cleared.

Dog bin now situated in Sprites Lane towards Belstead School and Litter bin has been installed on the corner of Ward Road and Skylark Lane.

Bus Stop Maintenance

It has become apparent that a few of the Pinewood bus stops that the Parish council has responsibility for, have deteriorated and are in need of a makeover.

The Council is reviewing maintenance options at this time, and assessing any requirements needed, including the tidying up of trees and shrubs/bushes that surround these units.

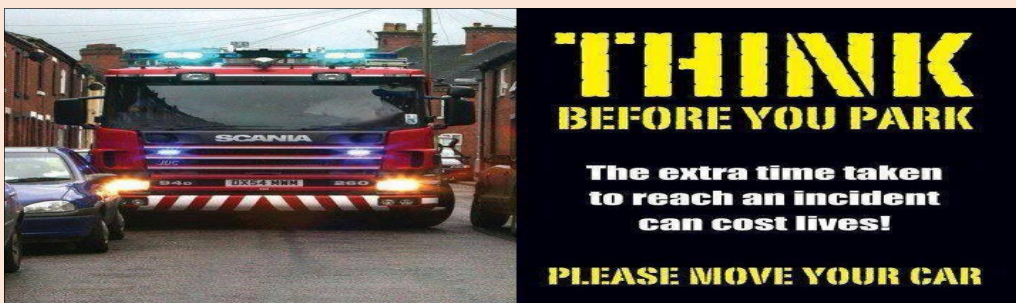
We will keep you informed of progress going forward.

Parking

Parking has become a daily issue to many residents who reside in the area of "One", this includes cars parking erratically which in turn is affecting and hindering services to local residents.

Actions Taken To Date

Our Suffolk County Council continues to have meetings with local facilities to resolve this issue. His continued focus on this issue ensures that there will be a resolution to student parking.



Maintenance

Servicing



Dealers of Distinction

Competitive Pricing

Astons Car Sales Ltd

32 Portmans Walk

Sir Alf Ramsey Way

Ipswich

IP1 2DW

01473 280055

Email: sales@astonscarsales.co.uk

Web: www.astonscarsales.co.uk

<https://www.facebook.com/Astons-Car-Sales-291930814257638/>

Astons has been established for more than 20 years and throughout that period it has earned a name for the supply of quality used cars.

All vehicles offered for sale are fully prepared to manufacturers schedules which include servicing and MOT and are backed up with a comprehensive warranty for customer peace of mind.

Astons is renowned for its personal, second to none customer service. In depth product knowledge is available for existing and prospective customers, which allows for complete peace of mind when purchasing from this renowned supplier.

#9PM Routine

On 3rd September, Suffolk police launched a social media campaign encouraging residents to get in the habit of completing a #9PM Routine. Although it could be seen as possibly stating the obvious, often offences are committed because these simple steps are not done so the initiative aims to remind residents to conduct vital checks both in their home and on their vehicles at a certain time in a bid to tackle opportunist thieves by setting a reminder on their mobile phones for 9pm to check their vehicles, shut all windows, lock all the doors and check any outbuildings. Full details of the initiative can be found on the Suffolk Police website.

A promotional graphic for the #9PM Routine campaign. It features a dark background with a blue padlock icon at the top center. Below the padlock is a digital clock showing "9:00" and the text "PM ROUTINE". To the left, a silhouette of a thief is shown with the text "Thieves look out for an easy target. Make it difficult for them by doing the 9PM routine". To the right, a hand holds a smartphone displaying a "9PM Routine" reminder. Below the central padlock is a checklist with four items, each preceded by a blue checkmark: "Car locked?", "Windows shut?", "Doors locked?", and "Shed secure?". The hashtag "#9PMRoutine" is at the bottom left. A blue banner at the top right says "Set a reminder now".

Shepherd Drive Baptist Church



Shepherd Drive Baptist Church

Sun 14th October 3pm – 5pm. Songs of Praise

Wed 21st Nov 1.30pm – 3.30pm. Golden Oldies

Wed 12th Dec 1.30pm – 3.30pm Christmas Party

Pinewood Parish Councillors

Name	Position	Email Address
Mr R Manning	Chairman	pinewoodpc@ntlworld.com
Mr A Rust	Vice Chairman	pinewoodpc@ntlworld.com
Mr N Smith	Councillor	pinewoodpc@ntlworld.com
Mrs B Calver	Councillor	pinewoodpc@ntlworld.com
Mr S Fisher	Councillor	pinewoodpc@ntlworld.com
Mrs J Preston	Co-opted Councillor	pinewoodpc@ntlworld.com
Mr G Dix	Co-opted Councillor	pinewoodpc@ntlworld.com
Mrs S Peartree	Parish Clerk	pinewoodpc@ntlworld.com
Mr C Hudson	Suffolk County Councillor	christopher.hudson@suffolk.gov.uk
Mr D Busby	Babergh District Councillor	david.busby@babergh.gov.uk
Mr P Burgoyne	Babergh District Councillor	Peter.Burgoyne@Babergh.gov.uk

Pinewood Parish Council - Contact Address

Pinewood Community Hall, Laburnum Close, Ipswich, Suffolk, IP8 3SL.
Office normally attended between 9am & 5pm, answerphone on 01473 692690 is available at all times.
Visit Our New Website for more Local Information at:
www.pinewood.onesuffolk.net/parish-council

Future Pinewood Parish Council Meeting Dates

Monday 08th October 2018 (Second Week)
Monday 12th November 2018 (Second Week)
Monday 10th December 2018 (Second Week)

Have you ever thought of being a Parish Councillor for Pinewood

Interested? Contact the Parish Clerk for further information on how you can get involved. Parish Council elections take place every four years, our next Pinewood election will be in 2019.
Parish Councils are non – political.

Plots Available at Belstead Field (Bobbits Lane)

Have you ever thought of having an allotment?
Enjoy fresh air, exercise and your own fresh fruit & vegetables.
Did you know Belstead allotments are at the end of Bobbits Lane, near the Anglian Water Works?



Contact the Field Secretary on 07870 504316

or

Chairperson on 07758 122046

Toilet & Refreshment Shed available



News and reports from Parish organisations are particularly welcome but contentious issues or articles promoting personal causes should be avoided – the Editor reserves the right not to print and to edit items submitted for publication. The views expressed in the Newsletter are not necessarily those of the Parish Council or Editor, and no liability can be accepted for any errors or omissions.

Corrections will be published should they occur.

This Newsletter is Published by Pinewood Parish Council, Laburnum Close, Ipswich, Suffolk IP8 3SL

Useful Contact Details

Name	Phone Number	Email/Web/Twitter Address
Police – Fire - Ambulance	999 Emergency Calls	101 Non Emergency Calls Only
Hadleigh Police Direct Phone Hadleigh Police Twitter Account Hadleigh Police Email Address	01473 613500	www.suffolk.police.co.uk https://twitter.com/@HadleighPolice snt.hadleigh@suffolk.pnn.police.uk
Police Connect – Website	Sign up on the website	www.suffolk.police.uk
Crimestoppers Anonymous	0800 555 111	
Suffolk SAFEkey	08444 121802	www.suffolk.safekey.org.uk
Burglar Alarm - Panther Security	01206 764303	www.panthersecurity.co.uk
Emergency Plumber/Electrician	0333 0146 190	www.checkatrade.com
Ipswich Hospital	01473 712233	www.esnft.nhs.uk/
NHS Emergency Information	111 Emergency Info	www.111.nhs.uk/
Pinewood Doctors Surgery	01473 682614	www.derbyroadpractice.co.uk
Pinewood Parish Council Pinewood Parish Website	01473 692690	pinewoodpc@ntlworld.com www.pinewood.onesuffolk.net
Babergh District Council	0300 1234 000	www.babergh.gov.uk
Suffolk County Council	0345 606 607	www.suffolk.gov.uk
Ipswich Borough Council	01473 432000	www.ipswich.gov.uk
Suffolk Trading Standards	03454 04 05	www.suffolk.gov.uk/tradingstandards
Suffolk One	01473 556600	www.suffolkone.ac.uk
Age UK – Website	01473 351234	www.ageuk.org.uk
Wellbeing Suffolk - Website	0300 123 1503	www.wellbeingnands.co.uk
British Gas - Emergency Number	0800 111 999	www.britishgas.co.uk
Electricity – Emergency Number	105	www.ukpowernetworks.co.uk
Report Road Defects (On-Line)	N/A	www.suffolk.gov.uk
Report Road Potholes, Fly Tipping	N/A	www.fixmystreet.com
British Telecom Customer Service	0870 062 6712	www.bt.com/help/home/faults/
Ipswich Household Waste Recycle Centre	Closed Wednesday	April- September 9am to 5pm October – March 9am to 4pm