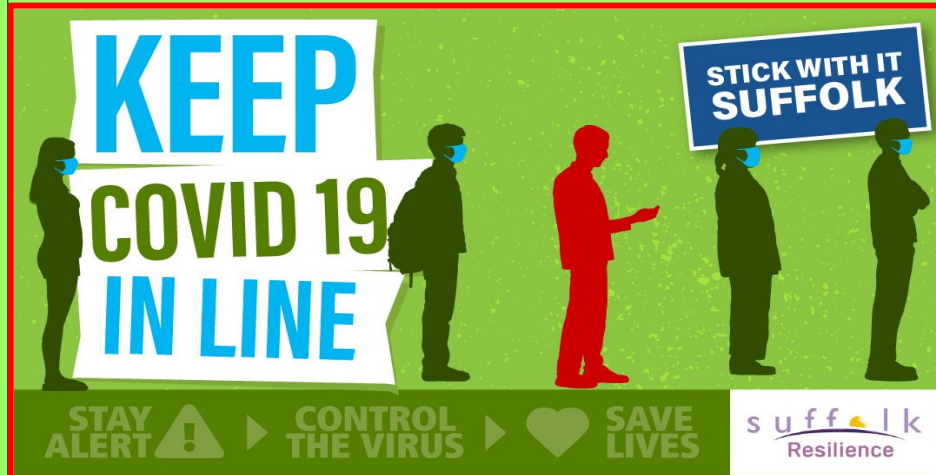


Pinewood Parish Council Newsletter

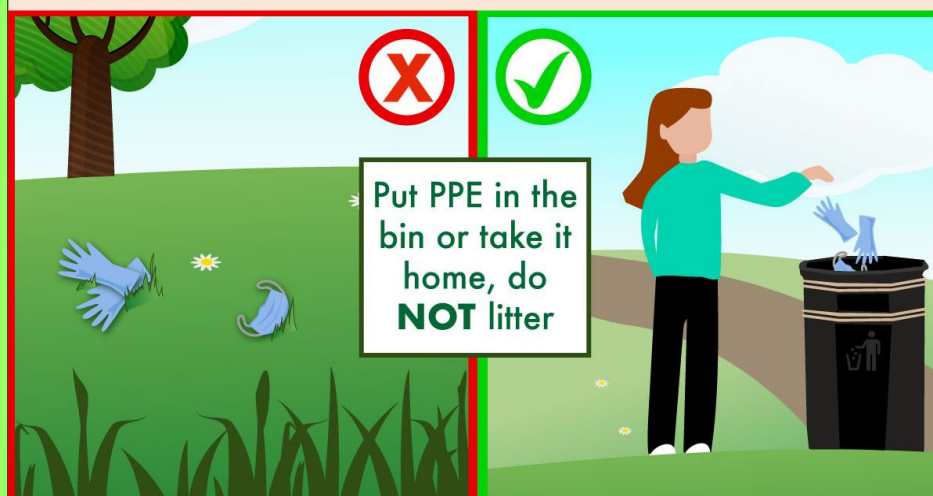
October 2020
ISSUE THIRTEEN



Due to the current Corona Virus pandemic and ongoing uncertainty of future rules and regulations, hard copies of the Pinewood Parish Newsletter will no longer be delivered to local residents after this Months delivery. The Newsletter will still be available electronically and will be posted on the Parish web site at www.pinewood.onesuffolk.net/ if you originally registered for an electronic copy you will still receive this. Please mail dixge@btinternet.com to register for a copy to drop directly into your inbox when it is available.

We know many of you enjoy your copy of the newsletter and it is retained in this manner to ensure it's availability keeps you up to date with local issues.

GD



Pinewood Parish – Latest Updates

Closure of footpath from Wilson/Wilding Road to Bridge School

Many of you will have been aware of concerns about the closure of the footpath at the back of the Bridge School and the decision of Suffolk County Council to change its status so that motor vehicles dropping off pupils at the Bridge School can use it instead of turning round and exiting via Sprites Lane. Pinewood Parish Council has also been genuinely concerned about this issue. Suffolk Highways has been contacted and we have asked them to change the arrangements. This request has so far been refused. We had no prior notice of this decision, in fact due to very poor and in fact erroneous information held by Suffolk County Council, it seems that Pinewood Parish does not exist, we have discovered it is not included on the definitive map of Suffolk Parishes despite being in existence since 1994.

Though Footpath 6, the one relating to this issue is shown on maps of Belstead and Pinewood as being located in Pinewood, it is probable that official footpath maps were not changed when Pinewood became a parish. As far as SCC is concerned it is part of Belstead. Notification of the change of status of Sprites Lane and the re-routing of traffic was therefore sent to Belstead Parish Council on 20th August. We would contend that even then it was short notice for the proposed re-routing of traffic which will affect Pinewood residents. Highways envisage that 15 – 20 vehicles per day will use the 'footpath' at the beginning and end of the school day. It is not clear how the Highways Department will ensure that it is not used by other traffic.

The road signs indicate it will be closed from Monday 7th September until next March. When the contractor responsible for putting the closures into place at the beginning of the school day, saw the narrowness and winding nature of the lane closest to Wilson Road he refused to open it as he did not consider it appropriate. We spoke to school staff guiding traffic exiting from the back of the school at the end of the school day and they had devised a one way system enabling traffic to exit via Sprites Lane as usual. However though the entire footpath is no longer going to be used, the footpath is still closed to walkers until March 2021 and there are barriers across it by the back gate of the school.

We will be contacting senior members and officers of SCC as a response to the refusal of the Council to consider re opening the footpath when not in use by school traffic. The reason we were given for not being included in the definitive map of Suffolk Parishes and the confusion over the exact location of Footpath 6 is that SCC is using information from the 1950s. We have been told that this information is being updated and digitalised but will take some time! By the time you read this we may have more information. This will be updated on the Pinewood Parish Council website.



BC

Parking changes came into affect on all roads in Pinewood from April 2020 where parking restrictions (Yellow Lines) are installed

If your road has restrictions on parking, it should be monitored by members of the Parking Enforcement Team. District and Borough Councils will be empowered to make local decisions to suit local circumstances. Irresponsible and nuisance parking is to be enforced and will be supporting pedestrians, vulnerable road users, public transport services, drivers and emergency services to use the network more safely.

From April 2020 to report a parking problem contact:

Telephone 01473 432840

<http://www.ipswich.gov.uk/content/report-parking-problem>



Coronavirus Pandemic

We all know we are living in difficult and uncertain times and as a result of this, Government guidance continually changes to reflect the current trends of Coronavirus.

All activities at Pinewood Community Hall were cancelled in March and following advice from NALC, the organisation for local councils, meetings of Pinewood Parish Council were also cancelled, these meetings were reinstated via a Zoom link in August. Councillors have managed to keep urgent Parish business going, albeit remotely.

With the current changes in advice and guidance given by the Government it is impossible to state when the Pinewood Community Hall facility will be fully open and running back to normal, keep up to date by visiting our website.

It is important that we continue to follow Government and health expert's advice to keep ourselves, others, and importantly, health workers safe. We all have our part to play in doing the right thing. It is clear that in order to protect everyone by further slowing down the transmission of this virus we have no choice but to continue to protect ourselves and others. Please continue to keep an eye out for elderly or vulnerable neighbours. Social distancing does not mean that we cannot make phone calls, we can keep in contact with friends and families by many ways such as Skype, Zoom, Facetime, Twitter, Instagram along with all manner of Social Media.

If you have to stay at home to self-isolate it could be in itself, difficult to cope with. There are a number of websites available that you can consult which are detailed below.

Use the 111 online coronavirus service to find out what to do if you have symptoms.
Call 119 to book a Corona Virus test if advised too.

Useful websites you may wish to consult.

NHS:

<https://111.nhs.uk/covid-19>

<https://www.nhs.uk/conditions/coronavirus-covid-19/>

Stay at home advice:

<https://www.gov.uk/government/publications/covid-19-stay-at-home-guidance>

Employment and financial support:

<https://www.gov.uk/government/topical-events/coronavirus-covid-19-uk-government-response>

New advice for chronic disease self-care:

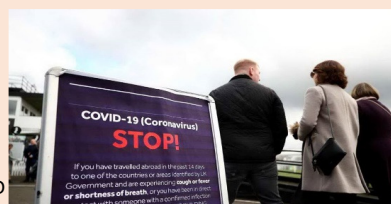
www.asthma.org.uk/advice/triggers/

www.nhs.uk/conditions/diabetes/

Mental Health Support:

<https://mentalhealth.org.uk/coronavirus>

GD



Useful Notifications

Drivers could soon be banned from parking on pavements - and fined if they fail to comply. Interested! – Carry out the Survey

Ministers are considering laws to prosecute drivers amid fears swathes of the country are blighted by 'parking anarchy'. Pavement parking is already banned in London, where guilty drivers are fined £70. The Department for Transport (DfT) has launched a public consultation on proposals for a nationwide restriction to be enforced by police and local councils. If approved, pavement parking could be banned by the end of the year. Councils would be asked to draw up a list of areas where pavement parking should still be permitted. New signs would indicate where the practice is allowed.

Government consultation on this issue has started.

The consultation period began on 31 August 2020 and will run until 22 November 2020 so ensure that your response reaches the Government before the closing date.

You may respond via the following:

If you would like alternative formats (Braille, audio CD, etc), contact pavement.parking@dft.gov.uk.

Visit the <https://www.smartsurvey.co.uk/s/2X12G/> link to start the survey.

*by downloading the response form and emailing pavement.parking@dft.gov.uk

*emailing pavement.parking@dft.gov.uk directly

Visit the following web site for detailed information:

www.gov.uk/government/consultations/managing-pavement-parking/pavement-parking-options-for-change

GD

Every year hundreds of thousands of pounds are spent clearing illegally dumped waste in Suffolk.

Report it if you come across it on your local journey



Telephone
0300 1234 000
(Option 4)

Let's **S.C.R.A.P.** fly tipping
suffolkrecycling.org.uk/fly-tipping

 Suffolk
recycles

 Environment
Agency

Exploited children and young people don't always look vulnerable and may not act like victims.

Look closer

If something doesn't feel right, it may not be.

Public spaces like bus and train stations, fast food outlets, shopping centres, hotels and roadside services can be where young victims of child exploitation are most visible.

Help us protect children and young people from exploitation and abuse. **Don't wait. Report it:**

If you are concerned about a child and think it's an emergency, dial **999** or **101** if it's not an emergency.

On a train text British Transport Police on **61016**.

Otherwise contact Crimestoppers on **0800 555 111**.

#LookCloser

childrenssociety.org.uk/lookcloser



 BRITISH
TRANSPORT
POLICE

 The
Children's
Society

 National Crime Agency
 NPCC 

Charity Registration No. 271224 © The Children's Society 2020 EA 2000451/0000

Local Policing Information



Only Call 999 In An Emergency Or If You Witness A Crime In Progress

Did you know that you can report non-urgent issues much quicker by using the web based reporting system on the Suffolk Police web site.

Our SNT remain active in the local area and are focused on the following key points:

1. Increasing patrols and enforcement to combat drugs and alcohol related issues in the area.
2. Working to control issues of young drivers who meet up at the Tesco site at night, who then travel roads throughout Pinewood creating mayhem by speeding, playing loud music and using vehicles with high noise emissions from the exhaust. Call 101 when this happens near you.
3. There remains a focus on speeding in all areas of Pinewood. Vehicles speeding nationally has risen hence a crack down on this behaviour is at the forefront of Police operations.
4. Anti Social Behaviour retains focus at the top of the agenda as always.

Latest crime figures released by the Police UK web site for the Pinewood area are available below and are available from <https://www.police.uk/pu/performance/>

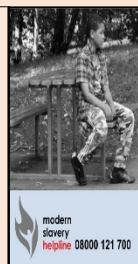
Have you ever wondered what the Police in Suffolk focus on, if so, please check the link below.

http://www.suffolk.police.uk/sites/suffolk/files/ceo_constables_county_august_online.pdf

Police are continuing to urge motorists to be vigilant and are appealing for information after further catalytic converter thefts have taken place in the county.

A number of incidents have been reported to police lately. Residents and motorists should remain vigilant and any suspicious behaviour around vehicles should be reported to police.

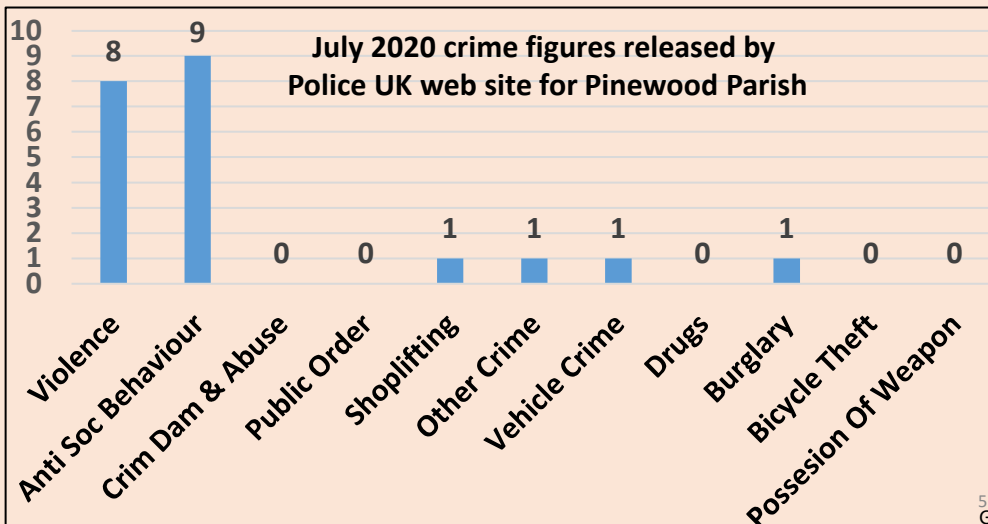
Officers are also appealing to anyone who may have captured any relevant dash-cam footage of cars being tampered with by suspicious persons.



County Lines

Someone in your family could be at risk?

- Do they have changing moods?
- Signs of bruising?
- Are they distant from family?
- Go missing for short periods of time?



Can You?

MAKE A DIFFERENCE

Why not set yourself a new challenge in 2020/21 by becoming a Pinewood Parish Councillor!

We need people like you to come and help shape our Parish by getting involved in local issues.

Are you interested in trying to make a difference in Pinewood Parish, which includes Thorington Park?

Make differences to your local environment, including recreational facilities, local transport, planning, housing, parking and speeding?

If so, we would love you to join us!

We have THREE VACANCIES – If you think can you make a difference please contact us

GD

actionfraud.police.uk/mulletover

Spotted a
suspicious
email?

If you have received an email which you're not quite sure about, forward it to the Suspicious Email Reporting Service (SERS)

report@phishing.gov.uk

ActionFraud
National Fraud & Cyber Crime Reporting Centre
www.actionfraud.police.uk

**Cyber
Aware**



TO STOP FRAUD

Name	Position	Email Address
Mr A Rust	Chair	pinewoodpc@ntlworld.com
Mrs B Calver	Vice Chair	pinewoodpc@ntlworld.com
Mrs J Preston	Councillor	pinewoodpc@ntlworld.com
Mr N Smith	Councillor	pinewoodpc@ntlworld.com
Mr R Manning	Councillor	manningrobert@hotmail.co.uk
Mr G Dix	Councillor	dixge@btinternet.com
Vacant	Councillor	Could this be you!
Vacant	Councillor	Could this be you!
Vacant	Councillor	Could this be you!
Mrs S Peartree	Parish Clerk	pinewoodpc@ntlworld.com
Mr C Hudson	Suffolk County Councillor	christopher.hudson@suffolk.gov.uk
Mr Zachary Norman	Babergh District Councillor	zachary.norman@babergh.gov.uk
Mr Ric Hardacre	Babergh District Councillor	Richard.Hardacre@babergh.gov.uk
Mr Tim Passmore	Suffolk Police & Crime Commissioner Twitter Account	spcc@suffolk.pnn.police.uk https://twitter.com/TimSPCC

Pinewood Parish Council Meeting Dates 2020

Meetings take place at the Pinewood Community Hall starting at 19.30hrs, and normally take place on the second Monday of the Month.

All physical Parish Council Meetings are cancelled until further notice

Parish Council meetings are planned to take place on the following dates in 2020

Monday 12th October - Monday 09th November - Monday 14th December

All Parish Council meetings are currently held via Zoom

Are you interested in joining the meeting via Zoom? if so, contact the Parish Clerk for guidance and joining instructions

Contact Details for the Newsletter

To contact the Parish Newsletter please email

dixge@btinternet.com

Are you a local business? Would you like to reach around 2000 local homes and businesses by advertising in this newsletter? If so, enquire about our competitive advertising rates.

This newsletter is printed periodically.

If your company would like to sponsor our Parish Newsletter? please get in touch!

News and reports from non-political and parish organisations are particularly welcome but contentious issues or articles promoting personal causes should be avoided – the Editor reserves the right not to print and to edit items submitted for publication. The views expressed in the newsletter are not necessarily those of the Parish Council or Editor, and no liability can be accepted for any errors or omissions.

Corrections will be published should they occur.

This newsletter is published by Pinewood Parish Council, Laburnum Close, Ipswich, Suffolk IP8 3SL

Pinewood Parish Council - Contact Address

Pinewood Community Hall, Laburnum Close, Ipswich, Suffolk, IP8 3SL

Please make initial contact via telephone or email for an appointment with the Parish Clerk.

Please use contact details on back page

Visit our website for more local information at: www.pinewood.onesuffolk.net/parish-council

Name	Useful Contact Phone Numbers	Email/Web/Twitter Address
Police – Fire - Ambulance	999 - Emergency Calls	101 - Non Emergency Calls
Hadleigh Police Direct Phone Hadleigh Police Email Address	01473 613500	www.suffolk.police.uk snt.hadleigh@suffolk.pnn.police.uk
Police Connect – Website	Sign up on the website	www.suffolk.police.uk
Crimestoppers Anonymous	0800 555 111	www.crimestoppers-uk.org
Suffolk SAFEkey	08444 121802	www.suffolk.safekey.org.uk
Anglian Water	0345 791 9155	www.anglianwater.co.uk
Emergency Plumber/Electrician	0333 0146 190	www.checkatrade.com
Ipswich Hospital	01473 712233	www.esneft.nhs.uk/
NHS Emergency Information	111 Emergency Info	www.111.nhs.uk/
Pinewood Doctors Surgery	01473 682614	www.derbyroadpractice.co.uk
Pinewood Parish Council Pinewood Parish Website	01473 692690	pinewoodpc@ntlworld.com www.pinewood.onesuffolk.net
Babergh District Council	0300 1234 000	www.babergh.gov.uk
Suffolk County Council	0345 606 607	www.suffolk.gov.uk
Ipswich Borough Council	01473 432000	www.ipswich.gov.uk
Suffolk Trading Standards	0345 404 0506	www.suffolk.gov.uk/tradingstandards
Suffolk One	01473 556600	www.suffolkone.ac.uk
Age UK – Website	0800 169 2081	www.ageuk.org.uk
Wellbeing Suffolk - Website	0300 123 1503	www.wellbeingnands.co.uk
Active Living – Meals on Wheels	01473 749927	www.aspectliving.org.uk
British Gas - Emergency Number	0800 111 999	www.britishgas.co.uk
Electricity – Emergency Number	105	www.ukpowernetworks.co.uk
Report Road Defects (On-Line)	N/A	www.suffolk.gov.uk
British Telecom Cust Service	0870 062 6712	www.bt.com/help/home/faults/
Ipswich Household Waste Centre April- September 9am to 5pm October – March 9am to 4pm	You must book a time slot on line. Take paperwork with you	www.suffolk.gov.uk/planning-waste-and-environment/waste-and-recycling/book-a-recycling-centre-time-slot/